

ÜRÜNLERİMİZ

A.GÜNEŞ PANELLERİ-

1. Mitsubishi MA 100A-Si thin film Güneş Paneli
Anma Gücü 100 Watt
Fiyatı: 170€+ KDV
Ebatları:1414*1114*35 mm
Menşei:Japonya



2. Mitsubishi Tandem Güneş Paneli MT-130
Anma Gücü:130 Watt
Fiyatı:185€+KDV
Ebatları:1414*1114*35 mm
Menşei:Japonya

3. Poli Kristalin Güneş Paneli
Ürün Adı:symphony SE –M-225
Anma Gücü:225 Watt
Fiyatı:200€+KDV
Ölçüleri:1636*982*35
Menşei:Kore



4. Binaya Entegre PV Paneller.



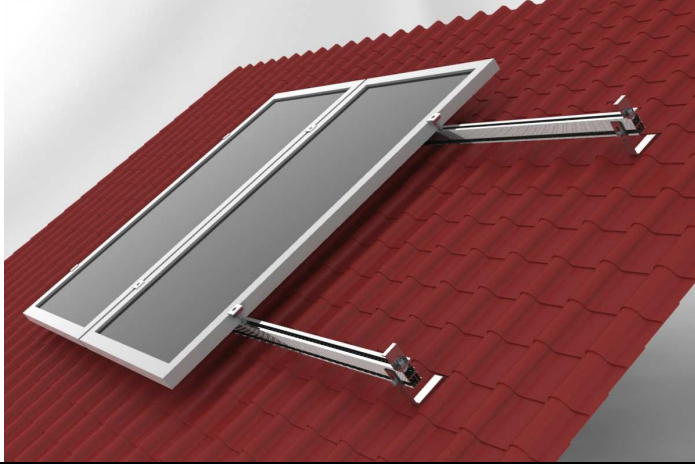
Sistem tasarımı ve Fiyatlandırma Projeye Göre Yapılmaktadır.








B) Inverter-Alman Mali Kaco inverterler

Model number		blueplanet 1502xi	blueplanet 2502xi	blueplanet 3502xi	blueplanet 5002xi
Input data (DC)					
DC operating range (MPP)		125 - 400 V _{DC}	200 - 450 V _{DC}	200 - 510 V _{DC}	200 - 510 V _{DC}
Max. DC input voltage		550 V _{DC}	550 V _{DC}	550/600* V _{DC}	550/600* V _{DC}
Nominal DC input current		14.3 A _{DC}	13.5 A _{DC}	18.5 A _{DC}	26.5 A _{DC}
Max. DC input Isc current		21.45 A _{DC}	21.45 A _{DC}	28 A _{DC}	40 A _{DC}
Output data (AC)					
Max. continuous output power (CEC)		1500 W	2500 W	3500 W	5000 W
Max. over-current protection		15 A	20 A	25 A	30 A
Max. continuous current	240 V	8 A _{AC}	12 A _{AC}	16 A _{AC}	24 A _{AC}
	208 V	8 A _{AC}	12.5 A _{AC}	17 A _{AC}	24 A _{AC}
AC operating range	240 V	211 - 264 V			
	208 V	184 - 226 V			
	220 V	198 - 242 V (for Mexico)			
Frequency		60 Hz (59.3 – 60.5 Hz)			
CEC rated efficiency	240 V	95.5%	95.5%	95.5%	95.5%
	208 V	95%	95%	95.5%	95%

C)Montaj Aparatları



Other Item Parça Adı	Part No.	Part picture	Unit price (€)
Ray (3260mm)	GR-R		15,98
Kanca	GR-IK-01		5

Ray Birleştirici	GR-R-SP		2, 4
Orta Bağlantı	GR-101		0, 98
Sonlandırıcı	GR-102-35		0, 90

Düz Çatı Tipi Montaj Seti



Ayak Uzunluğu:150 cm için:140 USD Tek Ayak Fiyatı:70 USD
Ayak Uzunluğu 65 cm için:70 USD